

Electrical Load Forecasting using Artificial Neural Networks: A Survey and Taxonomy

Chinmay Soman

M.Tech Scholar (Electrical & Electronics Engg)
SVCE, Indore (India)

Dr. Dev Kumar Rai

Professor and Head (Electrical & Electronics Engg.)
SVCE, Indore (India)

Artificial Due to increasing number of consumers, managing electrical load has become a serious challenge. Hence a good estimation of electrical load is necessary for smooth conduction of power systems. Previously statistical models were used for the prediction of electrical load, but with the advent of Artificial Neural Networks, load forecasting using Artificial Neural Networks has become an active area of research. The present paper introduces the need of electrical load prediction and subsequently the use of Artificial Neural Networks for the same. Different ANN architectures and their properties are presented here for a clear understanding of the tools being used. Finally evaluation parameters are discussed which evaluate the performance of any proposed system.

Keywords:-

Electrical Load Forecasting, Artificial Neural Network (ANN), ANFS- Adaptive Neuro-Fuzzy System

I. Introduction

Since the beginning of industrial revolution in early 20th century it has been clear that electrical energy is the most convenient form of energy. Hence every other form is converted first to electrical form and then it is further distributed to the consumers. At the beginning power generation is isolated and distributed. But with the increase in population and economic development requirement of electric energy has been gained by many folds. Hence inter connected power system is designed. The main benefit of this system is that sharing of electrical load between various generation is possible which enables best and most economical use of energy and generators.

Now being electrical engineer, it is clear to us that such high amount of energy is not practically possible to store we have to use all that energy as soon as it is generated.

Now here the main problem arises, which is that we have control over generation (except over wind and solar generation) but we have completely no control over the amount of demand or load connected at any time.

Hence to keep an equilibrium between the demand and generation we have to somehow develop technique to get an approx. idea of demand in near future.

In case we don't keep balance in generation and demand the system will be venerable and will lead to certain ill conditioning. For example, if generation is less than load connected then the bus voltage will decrease and also reactive power compensation requirement will also increase. When load connected is less than generation then voltage profile increases. Both above cases are harmful for switchgear devices as well as electrical devices connected.

This effect if occurs on large scale may even lead to the instability of power system which will further lead to put machine out of synchronism. Hence a proper efficient load forecasting method is to be developed to solve above problem by scheduling generation accordingly.

II. Artificial Neural Network (ANN)

Work on artificial neural network has been motivated right from its inception by the recognition that the human brain computes in an entirely different way from the conventional digital computer.[5],[7] The brain is a highly complex, nonlinear and parallel information processing system. It has the capability to organize its structural constituents, known as neurons, so as to perform certain computations many times faster than the fastest digital computer in existence today. The brain routinely accomplishes perceptual recognition tasks, e.g. recognizing a familiar face embedded in an unfamiliar scene, in approximately 100-200 ms, whereas tasks of much lesser complexity may take days on a conventional computer. A neural network is a machine that is designed to model the way in which the brain performs a particular task. The network is implemented by using electronic components or is simulated in software on a digital computer. A neural network is a massively parallel distributed processor made up of simple processing units, which has a natural propensity for storing experimental knowledge and making it available for use. It resembles the brain in two respects:

1. Knowledge is acquired by the network from its environment through a learning process.
2. Interneuron connection strengths, known as synaptic weights, are used to store the acquired knowledge.

Neural networks, with their remarkable ability to derive meaning from complicated or imprecise data, can be used to extract patterns and detect trends that are too complex to be noticed by either humans or other computer techniques. Other advantages include:

1. **Adaptive learning:** An ability to learn how to do tasks based on the data given for training or initial experience.
2. **Self-Organization:** An ANN can create its own organization or representation of the information it receives during learning time.
3. **Real Time Operation:** ANN computations may be carried out in parallel, and special hardware devices are being designed and manufactured which take advantage of this capability.

The biological model of the neuron is shown in the figure. It consists of the cell body, axon hillock, action potential, synaptic terminal, axon of pre synaptic neuron and dendrites. Signals from different parts of the body travel through different parts and reach the neuron where the neuron processes it and produces an output. It should be noted though that the output of a neuron may also be fed to another neuron. A collection of such neurons is called a neural network. The neural network can perform simple to complex tasks depending on the structure of the neural network.

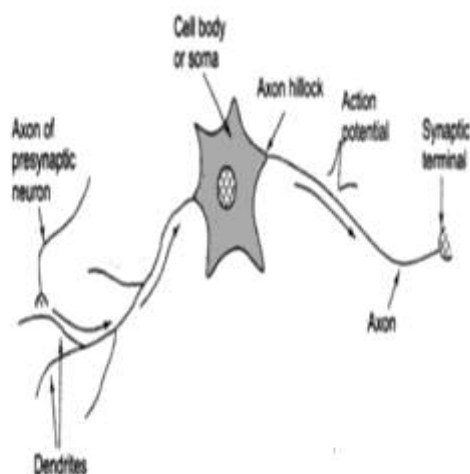


Fig.1 Biological model of neuron

After studying the basic biological model of the neural network, a mathematical model is envisaged to be designated. The mathematical model for such a neural network is given by:

$$\sum_{i=1}^n X_i W_i + \Theta$$

Where X_i represents the signals arriving through various paths, W_i represents the weight corresponding to the various paths and Θ is the bias. The above diagram exhibits the derived mathematical model of the neural network. It can be seen that various signals traversing different paths have been assigned names X and each path has been assigned a weight W . The signal traversing a particular path gets multiplied by a corresponding weight W and finally the overall summation of the signals multiplied by the corresponding path weights reaches the neuron which reacts to it according to the bias Θ . Finally its the bias that decides the activation function that is responsible for the decision taken upon by the neural network.

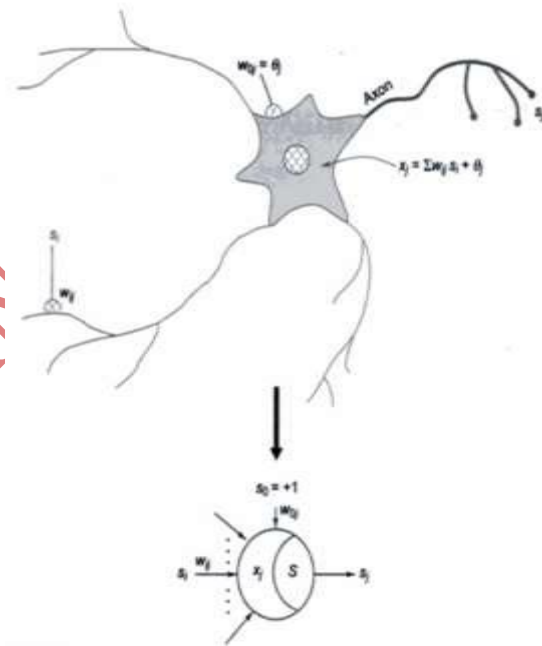


Fig.2 Mathematical model of a neural network

Neural networks can be used for tracking complex patterns in wind speed and subsequently predicting wind speed.

III. Different ANN Architectures

There are various ANN architectures which can be used for the prediction of data. The most commonly used ones are discussed below.

1. Single Layer Feed-Forward Network

In a layered neural network the neurons are organized in the form of layers. In the simplest form of a layered network, we have an input layer of source nodes that projects onto an output layer of neurons, but not vice versa. This network is strictly a feed forward type. In single-layer network, there is only one input and one output layer

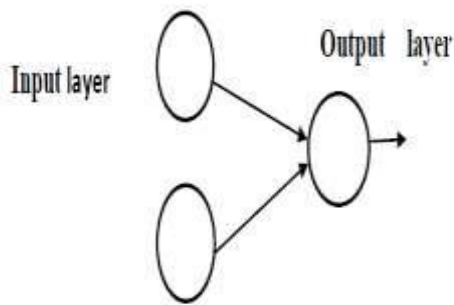


Fig.3 Single Layer Feed Forward Network

In feed forward networks, its important to note that the flow of signal is from input nodes towards the output node but the signal cannot propagate backward from the output node towards the input layers i.e feed back is not permissible.

2. Back-propagation Network (BPN)

BPN is a feed-forward network with three layers, namely input layer, hidden layer, and output layer, as shown in The number of hidden layers can be more than one, depending on the complexity of the problem. In our study, we used one hidden layer to minimize the computational time and reduce complexity of training.

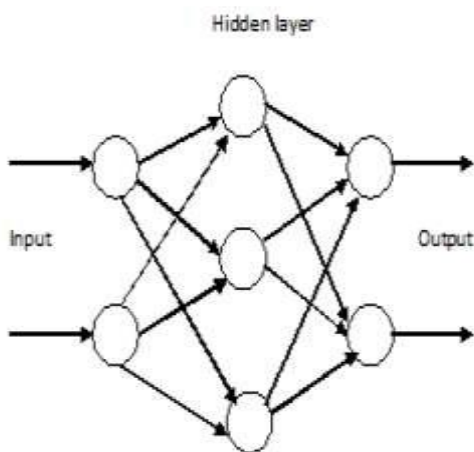


Fig.4 Architecture of Neural Network with Hidden Layers

Determining the number of layers and the number of processing elements per layer are important decisions, which are made by the programmer while creating and training the network. Training inputs are applied to the input layer of the network, and the desired outputs are compared at the output layer. The difference between the output of the final layer and the desired output is back-propagated to the previous layer(s). The back-propagated signals are usually

modified by the derivative of the transfer function and the connection weights, which are usually adjusted using the Delta Rule. The minimum mean square error between the actual output layer of the network and the desired output is minimized using the gradient descent algorithm. The performance of a neural network depends on the weights and the transfer function (input-output function) specified for the units.[8]

3. Radial Basis Function Network (RBF)

It is a three-layer network, namely the input, the output and the hidden layer, where each hidden unit in a hidden layer implements a radial activated function. The main advantages of RBF's over feed-forward networks are its accuracy and shorter computational time. As Venkatesan and Anitha [16] explained, the response of the jth-hidden unit can be mathematically expressed as

$$z_j = \phi \left[\left| \frac{x - \mu_j}{\sigma_j} \right| \right]$$

where ϕ is a strictly positive, radially symmetrical function (kernel) with a unique maxima at its center, μ_j , and σ_j is the width of the receptive field. The error between the target and the desired output is minimized using gradient descent algorithm.[18]

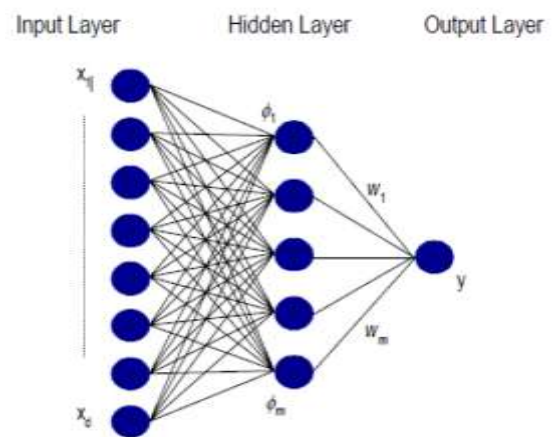


Fig5. RBF Network Architecture.

4. Adaptive neuro-fuzzy inference system (ANFIS)

Fuzzy logic and ANN are modelling methods used influentially and effectively in the problems of engineering. The modelling of fuzzy logic method is a rule-based method using the feature of human thinking and decision making. On the other hand, ANN learns the problem by using its ability of learning and comes through successfully for data sets it did not come across before. The method of ANFIS was suggested by Jang [7] considering these advantages of ANN and fuzzy logic methods. ANFIS is an integrated form of ANN and fuzzy inference systems. The membership degree of input/output variables is determined in an

ANFIS by the use of ANN's ability of learning. A conclusion is reached with the feature of reasoning and decision making of fuzzy logic method.[9]

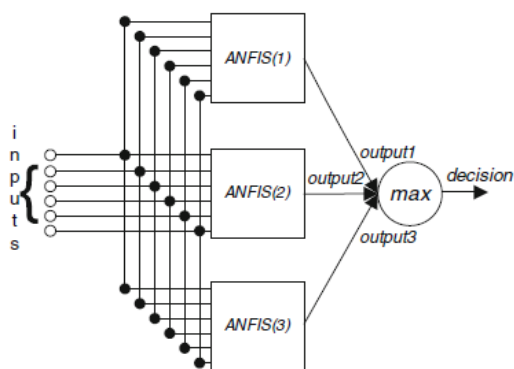


Fig5. The ANFIS Architecture

IV. Activation Functions

The activation function could be chosen from the following list: logistic sigmoid function, hyperbolic tangent function, or linear function. It is also possible to create a hybrid artificial neural network with different activation functions in different layers. However, there should be at least one non-linear activation function used in an ANN structure in order to retain its ability to solve non-linear problems. Activation functions tell us about the type of decision the neural network takes. Based on the type of decision the neural network has to take, a mathematical function called the activation function needs to be designed. The most commonly used activation-function features are shown in Table.1

Table.1

Activation Function	Mathematical Equation	Graphical Representation
Linear	$f(x) = x$	
Logistic sigmoidal	$f(x) = \frac{1}{(1 + e^{-x})}$	
Hyperbolic tangent	$f(x) = \frac{1 - e^{-2x}}{1 + e^{2x}}$	

Fig6. Different Activation Functions

It was shown that the activation function plays a very important role in the accuracy of artificial neural network results, but if a network could be trained successfully with a particular activation function, it would be highly probable that other activation functions would also result in an acceptable training. Linear activation functions have been used by some investigators in input and output layers. For the hidden and output layers, non-linear activation functions are used. Some studies show that the linear activation function in the output layer combined with a nonlinear activation function for a single hidden layer has positive effects on the performance of the ANN. This work adopts that ANN structure.

V. Evaluation Parameters

Since errors can be both negative and positive in polarity, therefore its immaterial to consider errors with signs which may lead to cancellation and hence inaccurate evaluation of errors. Therefore we consider mean square error and mean absolute percentage errors for evaluation. Mean Square Error is defined as:

$$MSE = [\sum_{i=1}^n (X - X')^2] / n$$

Mean Absolute Percentage Error is defined as:

$$MAPE = [\sum_{i=1}^n (X - X') / X'] / n \times 100\%$$

Here, X is the predicted value and X' is the actual value and n is the number of samples.

VI. Conclusion:

It can be concluded form the above discussions that Artificial Neural Networks can be effectively used for electrical load forecasting even though load may exhibit complex time series behaviour. Various Neural Network Architectures have been discussed with their salient features. Finally the evaluation parameters used for the evaluation of any prediction model to be designed have been explained with their physical significance and need.

References

[1] AbdollahKavousiFard, Haidar Samet, ForoughMohammadnia, "Evolutionary Short-Term Load Forecasting Based on ANN: A Comparison with the Most Well-known Algorithms", 24th Iranian Conference on Electrical Engineering (ICEE), IEEE, 2016.
[2] Victor Mayrink, Henrique S. Hippert, "A Hybrid Method Using Exponential Smoothingand Gradient Boosting for Electrical Short-TermLoad Forecasting", 2016 IEEE Latin American Conference on Computational Intelligence (LA-CCI), IEEE, 2016.
[3] Ni Ding, Clémentine Benoit, Guillaume Foggia, Yvon Bésanger, and Frédéric Wurtz, "Neural

Network-Based Model Design for Short-Term Load Forecast in Distribution Systems”, IEEE Transactions on Power Systems, IEEE, Volume: 31, Issue: 1, pp 72 – 81, 2015.

[4]Penghua Li, Yinguo Li, QingyuXiong, Yi Chai, Yi Zhang, “Application of a hybrid quantized Elman neural network in short-term load forecasting”, International Journal of Electrical Power & Energy Systems, Elsevier, pp 749-759, 2014.

[5]Hao Quan, Dipti Srinivasan, Abbas Khosravi, “Uncertainty handling using neural network-based prediction intervals for electrical load forecasting”, Energy, Elsevier, pp 916-925, 2014.

[6] Ajay Gupta and Pradeepta K. Sarangi, “Electrical Load Forecasting Using Genetic Algorithm Based Back- Propagation Method”, ARPN Journal of Engineering and Applied Sciences, Vol. 7, No. 8, 2012.

[7]Hao Quan, Dipti Srinivasan, Abbas Khosravi, “Short-Term Load and Wind Power Forecasting Using Neural Network-Based Prediction Intervals”, IEEE Transactions on Neural Networks and Learning Systems, IEEE, Volume: 25, Issue: 2, pp 303 – 315, 2013.

[8]Sharad Kumar, Shashank Mishra, Shashank Gupta, “Short Term Load Forecasting Using ANN and Multiple Linear Regression”, Second International Conference on Computational Intelligence & Communication Technology, IEEE, 2016.

[9]Kishan Bhushan Sahay, SuneetSahu, Pragya Singh, “Short-Term Load Forecasting of Toronto Canada by Using Different ANN Algorithms”, IEEE 6th International Conference on Power Systems (ICPS), 2016.

[10]H.L. Willis. Spatial Electric Load Forecasting. Marcel Dekker, New York, 1996.

[11] Renuka Achanta, “Long Term Electric Load Forecasting using Neural Networks and Support Vector Machines”, International Journal of Computer Science and Technology, Vol. 3, Issue 1, pp 266-269, 2012.

[12] Anand Mohan, “Mid Term Electrical Load Forecasting for State of Himachal Pradesh Using Different Weather Conditions via ANN”, Model International Journal of Research in Management, Science & Technology, Vol. 1, No. 2, pp 60-63, 2013.

[13] S.S. Somam, H. Zareipour, O. Malik, and P. Mandal, “A Review of Wind Power and Wind Speed Forecasting Methods with Different Time Horizons”. North American Power Symposium, Arlington, pp. 26-28, 2010.

[14] Wen-Yeau Chang, “A Literature Review of Wind Forecasting Methods”, Journal of Power and Energy Engineering, pp. 161-168, 2014.

[15] A.D.Papalexopoulos, T.C. Hesterberg, ‘A Regression Based Approach to Short Term LoadForecasting’, IEEE Transactions on Power Systems, 40 – 45, 1990.