

An Annual Controller In The Power System For TCR/TSC Devices

Authors: Km Shalini Verma¹, Dr. Imran Khan², Dr Malik Rafi³

¹M.Tech Student, Azad Institute of Engineering & Technology, Lucknow. Email: shaliniv046@gmail.com

²Profecor, Azad Institute of engineering & Technology, Lucknow. Email: pe.imran@gmail.com

³Profecor, RR Institute of engineering & Technology, Lucknow, Email: malik_rafi@rediffmail.com

ABSTRACT

It employs a Thyristor-Controlled Reactor (TCR) and a Thyristor-Xchanged Capacitor (TSC) circuit to carry out responsive force compensation and voltage guidelines. The goal is to skillfully regulate the termination point estimate of the TCR/TSC branch using a brilliant artificial neural system (ANN) regulator in order to minimize the rms and THD values caused by dynamic voltage. The conventional TCR/TSC based SVC compensator's typical control architecture is tweaked somewhat to achieve this. We have shown that a thyristor-terminating plot with improved regulating powers may improve the force factor and overall symphony mutilation of the line voltage and current (THD), replacing the ANN regulator. Adequacy with variable straight loads is tested using these progressions. Models and loads that may be individually addressed by RLC circuits are considered for use in reenactment. As an example, for some line supply cases, using a state-of-the-art ANN regulator design in each half-pattern of the voltage source produces ideal advantages of terminating points satisfying state-of-the-art r.m.s estimation.

Keywords: Control scheme, Grid integration, FACTS devices, Renewable energy, Voltage stability

1. Introduction

Force quality is increasingly important to power purchasers across all consumption levels. Problems with voltage variation, glare, droop, swelling, waveform spikes, symphonious bending, and imbalance are common causes of force quality issues. It is not uncommon to encounter non-direct loads like footing drives, adjustable speed drives, and the launch of a massive acceptance engine. Gear that is vulnerable to damage and loads that are not perfectly straight are common in both mechanical and domestic settings.

The characteristics of helpless force may be defined as any event connected to the power framework arrangement that actually causes financial loss. Equipment failure, hardware malfunction, overheating, damage to sensitive hardware, communication blockages between devices, utility-mandated sanctions, and the inability of new locations to connect to the matrix are all possible outcomes of weak force quality. Numerous opportunities to mitigate these force framework concerns exist because to the continuing advancements in power electronic devices. Among these, FACTS devices called Flexible AC Transmission Systems are utilized.

There are several distinct types of regulators available in the reality innovation system, and they may all be used alone or in conjunction with one another.[3] By controlling the flow of rotational current, FACTS regulators provide a fantastic opportunity to increase or decrease the force stream and capacity of poorly linked associated systems. Connecting these devices to the force framework enhances the reliability and consistency of the force. The project's responsive force pay is based on the breakdown of different kinds of FACTS devices.

1.1 Thyristor controlled reactor (TCR) for a single phase:

In order to meet the current carrying capacity and voltage blocking capacity, the number of thyristors linked in series or parallel may be determined by the voltage and current ratings, and the TCR is composed of an air-cored inductor and a bidirectional thyristor valve. You can control the current in a reactor from zero to its maximum rating. We can see a schematic of one such TCR down below.

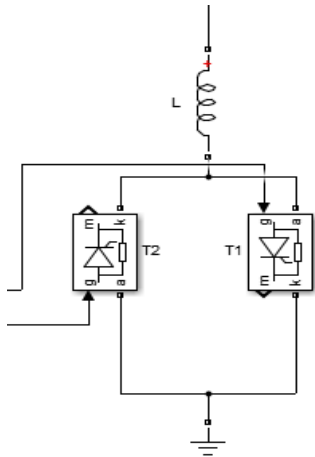
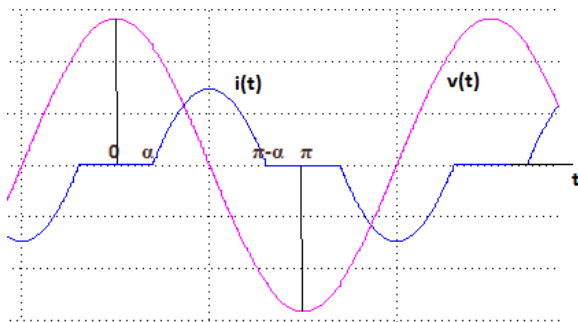


Fig. 1: TCR Circuit diagram



For a certain firing angle, the voltage-current waveforms are shown in Figure 1.2.

1.2 Thyristor exchanged capacitor with a single stage:

A bidirectional thyristor switch exchanged the capacitor associated with transport. A small inductor is incorporated into the arrangement to limit the flood current through the appropriate use of the entrance signal[7,3]. The capacitor can be exchanged into or out of the framework. It is important to note that the responsive force cannot be regulated by the current passing through the capacitor.

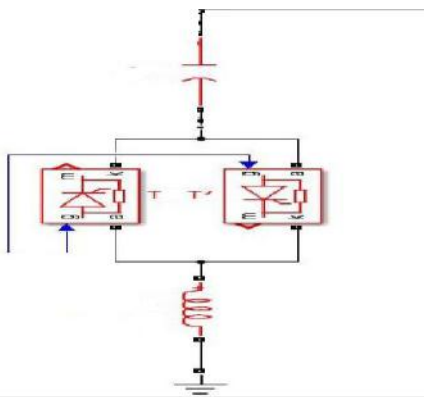


Figure 1.3 shows a schematic of a TSC.

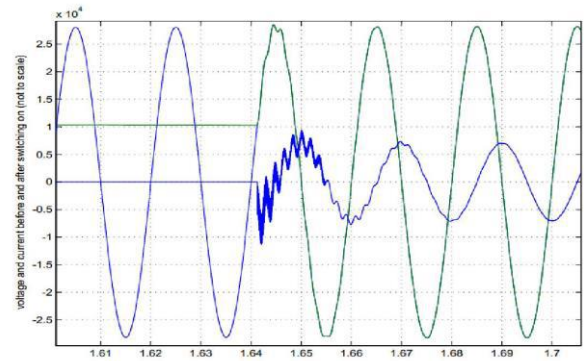


Fig. 1.5 Waveforms of voltage and current before and after switching

1.3 Shunt compensator based on converters:

Up until now, we've been talking about factor permission type shunt compensators. These involve a control variable, usually the termination edge, that modifies the induction given by the regulator and also the receptive force imparted or absorbed. An additional kind of compensator uses a voltage source converter (VSC) to transfer responsive force throughout the system. One key feature that sets these converters apart from their predecessors is the proximity of the capacity component, which is often a capacitor.

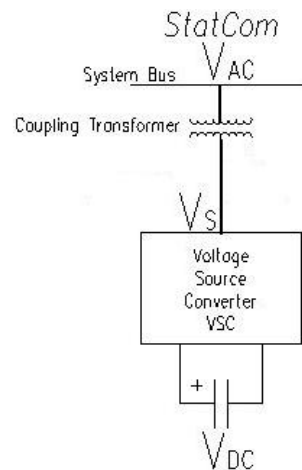


Fig. 1.4 Model STATCOM

You can see a basic square graph of STATCOM in the above chart; it can absorb and transmit any metric of receptive catalyst (according to its rating). The itemized model and the normal model, both of which are three-stage STATCOMs, are re-created in this study[5,6]. Pay for receptive force and the effects of STATCOM presentation are the hot topics of discussion.

2. Result Analysis

2.1 Outcomes and Analysis:

For usage with an ANN regulator, a voltage guideline was established for SVCs running at 6000 MVA and 735 kV. The SVC has a 333-MVA transformer with a voltage of 735 kV/16 kV, as well as three 94 MVAR thyristor-exchanged capacitors (TSC 1, 2, and 3), and an optional 109 Mvar thyristor-controlled reactor (TCR). With ANN-based terminating control of TSCs, a capacitive range of up to 282 MVAR at steps savvy growth of 94 MVAR per TSC is possible, and with stage control at TCR, a range of up to 109 MVAR is possible for inductive forces. Thus, in totally capacitive mode, the SVC's resultant susceptance is +3.23 pu/100 Mvar, and in fully inductive reactance mode, it's -1.04 pu/100 MVA. The reactance on the transformer side is balanced by the SVC. The SVC tweaks the thyristor beats in response to the necessary voltage as criticism, ensuring that the provided susceptance is in accordance with the ideal reference value.

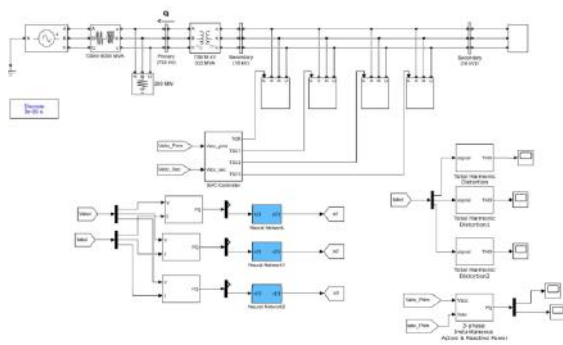


Fig.6: SVC controlled power system based on ANN controller and TSC.

Figure 1 shows that the TCR and TSC are really communicating with a three-stage bank linked with delta. Reduced force framework symphonic infusion is the result of delta association catching the third, ninth, etc. sounds. With a 200 MW demand and an inductive proportional wellspring rated at 6,000 MVA, the three-stage framework may be seen. In order to keep an eye on the SVC's execution in dynamic situations caused by fluctuations in the source voltage, the ANN-controllable voltage source is programmable. There are several individualized variants of the voltage source's voltage succession.

This section and investigation primarily aim to demonstrate the shortcomings of the voltage

guideline and dynamic execution framework by simulating the single stage TCR/TSC Static Var Compensator in MATLAB/Simulink. Along with that, this section introduces the SimuLINK model with SVC and the Transient Stability technique. Quick voltage management to assist electric force transmission voltages in the aftermath of major disturbing impacts is provided by SVC, a thyristor-based regulator. Electric utilities have been increasingly concerned with voltage solidness and responsive force related framework limits since deregulation and the separation of transmission and age frameworks in the electric sector got underway. During the planning research, if voltage security or blockage difficulties are identified, cost-effective solutions should be addressed. Improve voltage strength, voltage guideline, and force framework soundness and damping with the help of these devices and the right control. For a long time, the most important FACTS devices, known as Static Var Compensators (SVCs), have been used to fix dynamic voltage problems and enhance transmission line financial considerations. Elite continuous state and transient voltage control is made possible by SVCs thanks to their accuracy, accessibility, and rapid reactivity.

2.2 System Performance:

The dynamic behavior of the SVC model is depicted in terms of scope waveforms in the simulation. The voltage regulation mode is implemented by the ANN controller due to the fluctuating incoming voltage. The reference voltage for the controller is $V_{ref}=1.0$ pu. The ANN controller's voltage droop is calculated at 0.01 pu/100 VA. Consequently, the SVC voltage supply is completely located in the range of $1-0.03=0.97$ and $1+0.01=1.01$ in PU when the SVC operating point is transitioned from capacitive reactance +300 Mvar to inductive reactance -100 Mvar through the switching of TCR and TSC.

When the SVC is not in use, the voltage at the terminals is about 1 pu since the voltage supply is originally set at 1.004 pu (see Figure 2). Since V_{ref} is supposed to be set to 1, pu, the SVC is idle and produces no current at its output. Because they are in full conduction mode and firing at an angle of $\alpha=96^\circ$, the TSC1 and TCR are the only components in this scenario that keep these operational conditions.

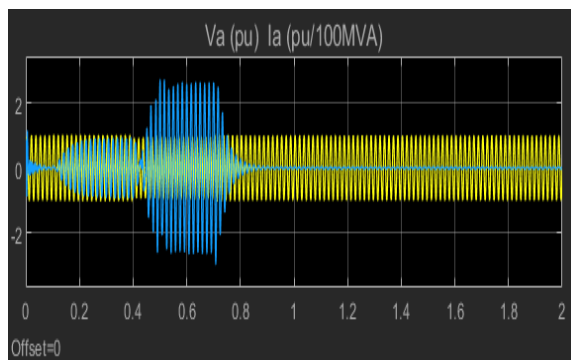


Figure 7 illustrates the dynamics of the voltage source as a result of fluctuation.

At the start of time $T=0.1$ seconds, the voltage was suddenly raised to 1.025 pu. As mentioned earlier, the voltage drops to 1.01 pu when the SVC starts absorbing reactive power ($Q=-94$ Mvar). It is noted that the transients had subsided after around 135 ms. At the moment, the TSCs are not doing anything in this time zone, thus the TCR is running in full conduction mode and is responsible for regulation alone.



Fig. 8 illustrates the controlled generation of reactive power by TCR and TSC to mitigate voltage fluctuations.

At the point T, which happens after 0.4 seconds, the source voltage drops suddenly to 0.93 pu. After reaching a stable voltage of 0.974 pu, the SVC produces 256 Mvar of reactive power to offset the decline. At the switches, the TCR absorbs around 40% of its nominal reactive power, and all TSCs are turned on to make up for the voltage drop. The alpha firing angle, shown in Figure 3, decreases from 94 degrees to 12 degrees. This voltage regulation zone gradually turns on and off the trace of signals from TSCs. The TCR alpha angle goes through a sudden change from 18 degrees (no conduction) to 9 degrees (complete conduction) when a TSC is activated. After all the fluctuations are taken care of and the SVC reaches its reactive

performance, the voltage will go back to 1 and the output will be zero.

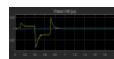


Figure 9 shows the ANN controller regulating the voltage.

The capacitor of a TSC stays charged even after the switch is turned off. As shown in Figure 4, this causes the voltage at the thyristor, which conducts the positive current signal, to fire at the maximum negative TSC voltage just as the voltage across the whole switch reaches its lowest point. Under dynamic situations, a firing pulse that is not significantly delayed will result in an extremely high current flow through the TSC switches if the ANN controller is not tuned correctly.

CONCLUSION

Electrical energy has become an indispensable component of contemporary business and personal activities. Regrettably, a significant amount of force is being wasted in the transmission and conveyance systems. Specifically, the widespread distribution of piles, inadequate responsiveness of pay offices, and their inappropriate management are resulting in substantial losses due to electrical appropriation frameworks. The force is transmitted through outspread feeders that extend over extensive regions in the provincial region as a result of agrarian burdens. There are both single-stage and three-stage LT consumers. The system calamities are high, the consumer end voltages are poor, the force factors are slacking, and the nature of influence flexibly is poor. As a result of these factors, power framework engineers are extremely concerned about resolving these issues in the allocation sector. The most captivating issues in power framework design have been voltage control and responsive force compensation. It is situated within this perspective. This theoretical work is an attempt to construct a Static Var Compensator that is generally reasonable for dispersion systems. A SVC ANN regulator square should not generate

erroneous terminations; therefore, the pulses that are synchronized to the test are of paramount importance. In any case, the thyristor current is more than multiple times the pinnacle current rating due to the TSC being blocked, which results in a bogus terminating time when the voltage is at its most extreme positive. Additionally, the voltage across the thyristor is 3.8 times the standard pinnacle estimation of voltage. Arrester devices are employed to prevent such overflows and overvoltages at the thyristor of the TSC. Investigative and reproduction examinations are conducted to evaluate the presentation using the framework information. A fast-acting, error-tolerant regulator is designed to be suitable for both contactor-exchanged and thyristor-exchanged capacitors. The exchange duties that are completed are non-transient; therefore, there is no compelling reason to restrict reactors by inrush current, and the TCR size is designed to provide low rates of non-triple noises. It also promotes a consistent control method for a continuous range of responsive force that is closely aligned with load requirements in order to maintain power factor stability on a consistent basis.

REFERENCES

- [1]. Caferra, R., D'Adamo, I., & Morone, P. (2023). Wasting energy or energizing waste? The public acceptance of waste-to-energy technology. *Energy*, 263, 126123. <https://doi.org/10.1016/j.energy.2022.126123>
- [2]. Caricimi, R., Dranka, G. G., Setti, D., & Ferreira, P. (2022). Reframing the Selection of Hydraulic Turbines Integrating Analytical Hierarchy Process (AHP) and Fuzzy VIKOR Multi-Criteria Methods. *Energies*, 15(19), 7383. <https://doi.org/10.3390/en15197383>
- [3]. Carvalho, J. P., Zhang, N., Murphy, S. P., Leibowicz, B. D., & Larsen, P. H. (2020). The economic value of a centralized approach to distributed resource investment and operation. *Applied energy*, 269, 115071.
- [4]. Castillo, A., & Gayme, D. F. (2014). Grid-scale energy storage applications in renewable energy integration: A survey. *Energy Conversion and Management*, 87, 885-894.
- [5]. Chaitanya, K. K. (2014). A SINGLE-STAGE SOLAR POWER CONVERTER FOR PV BATTERY SYSTEM.
- [6]. Chandel, T. A., Mallick, M. A., & Yasin, M. Y. (2021). Performance Analysis of Rooftop Grid Connected Solar Photovoltaic System. *Advanced Aspects of Engineering Research, BP Publication*, 13, 156-181. DOI: 10.9734/bpi/aaer/v13/9364D
- [7]. Chandel, T. A., Yasin, M. Y., & Mallick, M. A. (2023, March). Impact of Parasitic Resistance on Modelling and Performance of Solar Photovoltaic Module. In *2023 International Conference on Device Intelligence, Computing and Communication Technologies, (DICCT)* (pp. 22-27). IEEE. DOI: 10.1109/DICCT56244.2023.10110047
- [8]. Chen, K., Peng, H., Gao, Z., Zhang, J., Chen, P., Ruan, J., ... & Wang, Y. (2022). Day-ahead operation analysis of wind and solar power generation coupled with hydrogen energy storage system based on adaptive simulated annealing particle swarm algorithm. *Energies*, 15(24), 9581. <https://doi.org/10.3390/en15249581>
- [9]. Connolly, D., Lund, H., Mathiesen, B. V., & Leahy, M. (2010). A review of computer tools for analysing the integration of renewable energy into various energy systems. *Applied energy*, 87(4), 1059-1082.
- [10]. D. Connolly, H. Lund, B. V. Mathiesen, and M. Leahy, "A review of computer tools for analysing the integration of renewable energy into various energy systems," *Applied Energy* 2010; 87(4): 1059-1082.
- [11]. Abdelrazik, M. K., Abdelaziz, S. E., Hassan, M. F., & Hatem, T. M. (2022). Climate action: Prospects of solar energy in Africa. *Energy Reports*, 8, 11363-11377. <https://doi.org/10.1016/j.egyr.2022.08.252>
- [12]. Abdullah-Al-Mahbub, M., Islam, A. R. M. T., Almohamad, H., Al Dughairi, A. A., Al-Mutiry, M., & Abdo, H. G. (2022). Different forms of solar energy progress: the fast-growing eco-friendly energy source in Bangladesh for a sustainable future. *Energies*, 15(18), 6790. <https://doi.org/10.3390/en15186790>
- [13]. Abid, H. (2019). Techno-economic analysis of energy storage integration for solar PV in Burkina Faso.
- [14]. Aftab, K. H., Yaseen, M. Y., & Asim, M. (2023, February). DC Connected Solar Plus Storage Systems: An Overview. In *2023 International Conference on Power, Instrumentation, Energy and Control*

(*PIECON*) (pp. 1-6).
IEEE.DOI: 10.1109/PIECON56912.2023.1008
5778

- [15]. Agyekum, E. B. (2021). Techno-economic comparative analysis of solar photovoltaic power systems with and without storage systems in three different climatic regions, Ghana. *Sustainable Energy Technologies and Assessments*, 43, 100906.